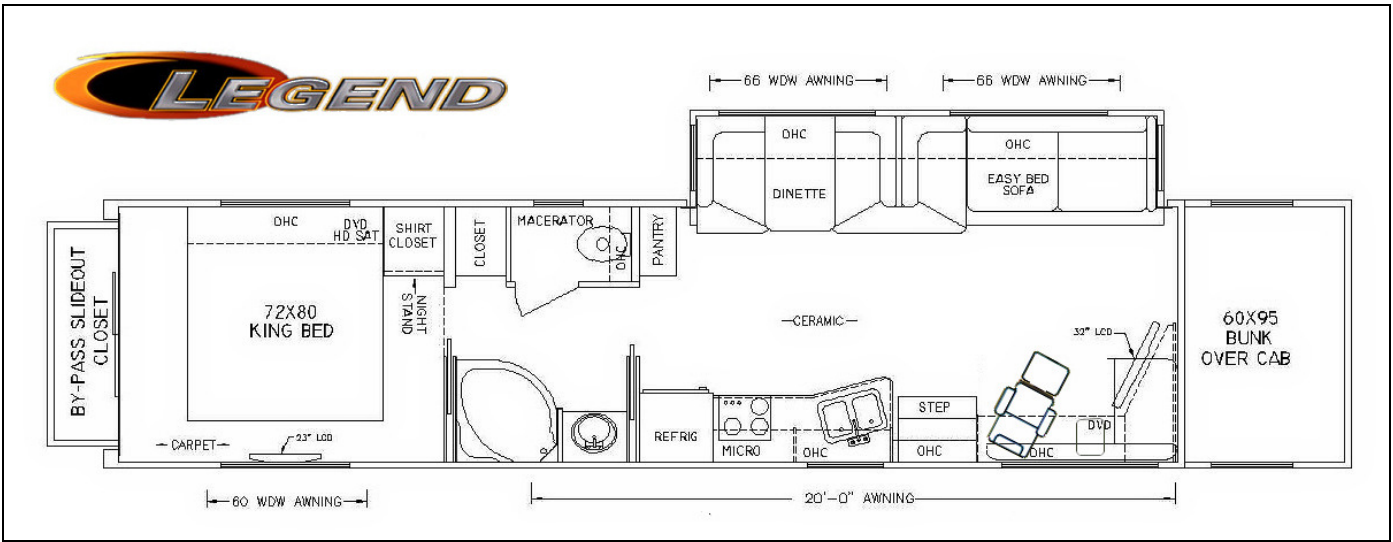
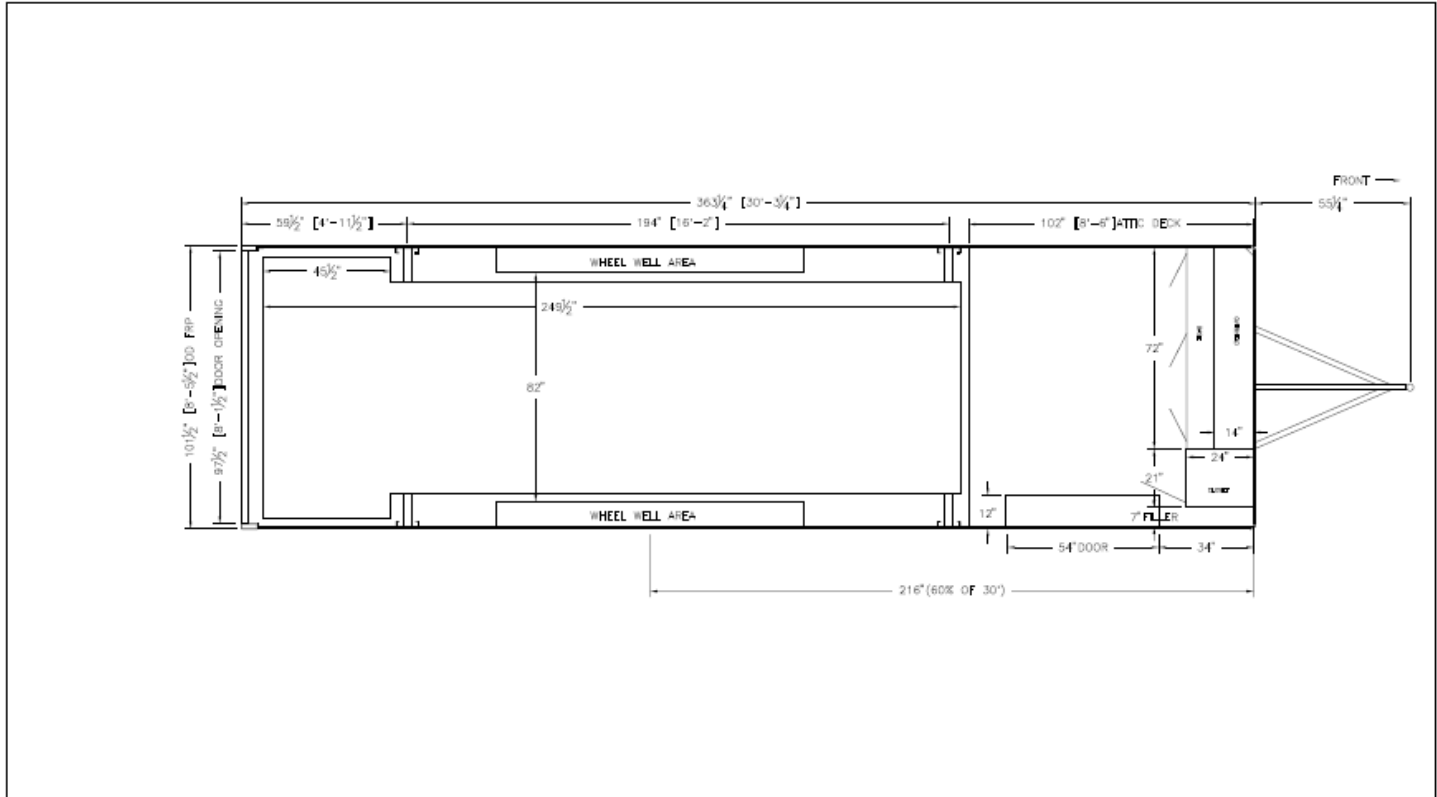



Legend "Motor Homes"	Model
2009 Standard Features & Description	34 Custom
Chassis Designation	FL Chassis
EXTERIOR	
1 " x 1-1/2" Welded Aluminum Framed (Walls & Ceiling)	N/A
1-1/2" x 1-1/2" Welded Aluminum Framed (Walls & Ceiling)	S
Gel coat Fiberglass (1pc.) Laminated (Walls & Ceiling)	S
1" Insulated High-Density Foam (Walls & Ceiling)	N/A
1-1/2" Insulated High-Density Foam (Walls & Ceiling)	S
Seamless (1pc.) Rubber Roof	S
60" x 96" Front Overhead Bunk w/ Windows	S
3" x 2" Welded Steel Framed Floor Sub-Structure (Main Rails)	N/A
6" x 2" Welded Steel Framed Floor Sub-Structure (Main Rails)	S
Galvanized Steel Wheel Wells & Full Underbelly Vapor Barrier	S
3/4" Plywood Sub-Flooring w/45oz. Nylon Carpet w/10# 5/16" Pad	S
16.40 Gallon LP (Frame Mount Bottle)	N/A
40.48 Gallon LP (Frame Mount Bottle)	S
06 Gallon DSI Propane Water Heater	N/A
10 Gallon DSI Propane Water Heater	S
100 Gallon Fresh Water Tank & Exterior Water Spigot	N/A
200 Gallon Fresh Water Tank & Exterior Water Spigot (NON Slide Bed)	S
Dual Holding Tanks (1) Black & (1) Grey	S
(2) 13,500 BTU AC's w/Heat Strip (1) in LQ & (1) in Bedroom	S
8.0 KW Onan 8000 Quiet Diesel Generator (M-2 Forced Option)	S
110 Volt Outlet (Roadside)	S
Stainless Steel Baggage Doors w/ Gas Struts	S
(2) 36' x 26" Slider Windows & (1) 36" x 26" Egress Window	S
(1) 15" x 18" Slider Window (Over Sink)	S
Tag Hitch	N/A
Heavy Duty Tag Hitch	S
(18 - 24) Exterior L.E.D. Clearance Lights (Model Specific)	S
26" x 76" Entry Door w/Safety Bumper & Entry Porch Light	S
Entry Door Step Well Cover***	S
Electric Steps w/ Step Well Light & Designed for Easy Entry	S
All Break & Back-up Lights (LED)	S
Rear Roof Access Ladder	S
Undercoating / Paint on All Exterior Steel Components	S
Electric Transfer Switch Between Shore Power & Generator	S
Lighted Grab Handle (Outside Entrance)	S

INTERIOR	34 Custom
White Padded Washable Vinyl Ceiling (Ducted AC)	S
39" x 72" Jack-Knife Sofa/Sleeper or (39" X 72" Dinette Optional)	N/A
39" x 72" Sofa/Sleeper w/Sofa Table Storage & 39" X 72" Dinette	S
Beverage and Remote Control Holders (Located at Sofa)	S
Deluxe Reclining Chair	S
34" x 34" SCD Shower w/Screen, Sink, Lighted Vanity / Linen in Bath	N/A
38" x 38" CSS Shower w/ Door, Lighted Vanity & SS Lavatory Sink	S
Thetford Toilet Floor Mount & 12Volt Ceiling Fan in Bathroom	S
Vinyl Flooring in Bath	S
(1) 20' x 30" Removable Pedestal Table at Sofa	N/A
Solid Hardwood Cabinetry "Natural Oak" (Glued & Screwed)	S
Overhead Cabinets, Night Stand & Full Length Closet in Bedroom	S
12" Full Length Pantry	S
(1) 18" Full Length Closet	S
(1) Pullout Drawer(s)	S
Pantry and/or Storage Over Refrigerator	S
(1) Fantastic Fan in Over-Cab Bunk Area	S
60" x 80" Queen Size Bed w/ Mattress, Bed Spread & Pillows	S
60" x 96" x 4" Over-Cab Fabric Covered High Density Bunk Mat.	S
Indirect Lighting, (4) Bullet Style Halogen Lights & Ceiling Lights	S
(1) Magazine Rack	S
(2) Single Pan & (1) Double Pan 12Volt Lighting	S
(3) 12Volt Deep Cycle House Batteries w/ Bi-Directional Charging	S
2000 Watt Power Inverter	S
(1) Stainless Steel Sink Bowl in Galley	N/A
(1) Double Bowl Stainless Steel Sink in Galley	S
2 Burner Cook Top Stove	S
1.0 cu. Ft. Microwave	S
8.0 cu. Ft Gas / Electric Refrigerator	S
35,000 BTU LP Gas Furnace	S
(1) 20" TV in Living Quarters	S
(1) 14" TV/DVD in Bedroom	S
Water Shut Off at Pump & Tank	S
Crown Molding / Ceiling Trim	S
Safety Door Stops on All Interior Doors	S
Step Well Cover at Entry Doors***	S
Home Theater System Complete (AM/FM/CD & DVD)	S
Reading Lights Under Cabinets	S
House Battery Disconnect at Entry Door Step Well	S
Wall Clock w/Cabinet Shelf Over Entry Door	S
Full Length Mirror (Where Applicable)	S
Controls Center in Cabinet (Generator, Slideout, Invertor, etc.)	S
QUALITY, INTEGRITY, SERVICE & SATISFACTION	S



Trailer Specifications;



<small>THE SCHEDULE SHOWN IS THE PROPERTY OF THE ORIGINAL LISTED MANUFACTURER. THIS SCHEDULE MAY NOT REPRESENT THE LATEST MANUFACTURING INFORMATION. THE USER SHALL BE RESPONSIBLE FOR OBTAINING THE LATEST MANUFACTURING INFORMATION FROM THE MANUFACTURER.</small>		DRAWN BY: X. & W. MODEL: PX-30T DRAWING DESCRIPTION: TOP VIEW OF 30' TRAILER DRAWN DATE: 08/16/07 DRAWING SCALE: 3/8" = 1' DATE:	CUSTOMER: SERIES: PONY EXPRESS TRAILERS FILE LOC & FILE NUMBER: A:\DEPT\ENGINEERING\DRAWINGS\SILVER CROWN\TRAILERS\25220101_3	 SILVER CROWN <small>A QUALITY CONNECTION COMPANY</small>
LET	REVISION DESCRIPTION	BY	DATE	PART#

P30RST Trailer Features

Length: 30'
 Width: 102" Exterior 100" Interior

Interior Height: 138"

Under Attic Head Room: 76"

Axles: (3) 7K Spring Suspension & Electric Brakes

Tires: LT235/85R16 Mounted on HWT Aluminum Wheels

Spare Tire: Matching Wheel and Tire

Structure: Walls- 5/8" FRP

Roof – 1/2" FRP Full Walk On

Frame: 6" W Beam w/Cross Members on 16" Centers

Attic: 9' 2x2 Steel Tubing with FRP Floor

Attic Access: Ladder and Hatch on Road Side

Flooring: 3/16" Thick Aluminum Plate

Tongue Jack: Electric/Hydraulic w/Front and Rear Controls

Ramp Door: 9' x 97"W w/36" Aluminum Extension

Lift: 16'w/3/16" Aluminum Plate Floor & 48" Factory Installed Access Extension

Lift: Fully Finished Underside w/6 12V Lights

Side Entry Door: 54" HD w/single handle operation of Rear Section

Tie Downs: (8) D-Rings (2) 18' Strips E-track LL and on Lift

Carpeted Walls 36" High

Electrical: 30 Amp Service

(2) 100Amp Deep Cycle Batteries

(1) 30 Amp Shore Cord w/Twist Lock Attachment (25')

(8) 48" Florescent Lights

(5) 18" Florescent Lights

(10)12V Bullet Lights

(4) Switches

(2) Rear recessed Load Lights

(2) Recessed Side Lights (Curb Side)

All Marker and tail Lights LED

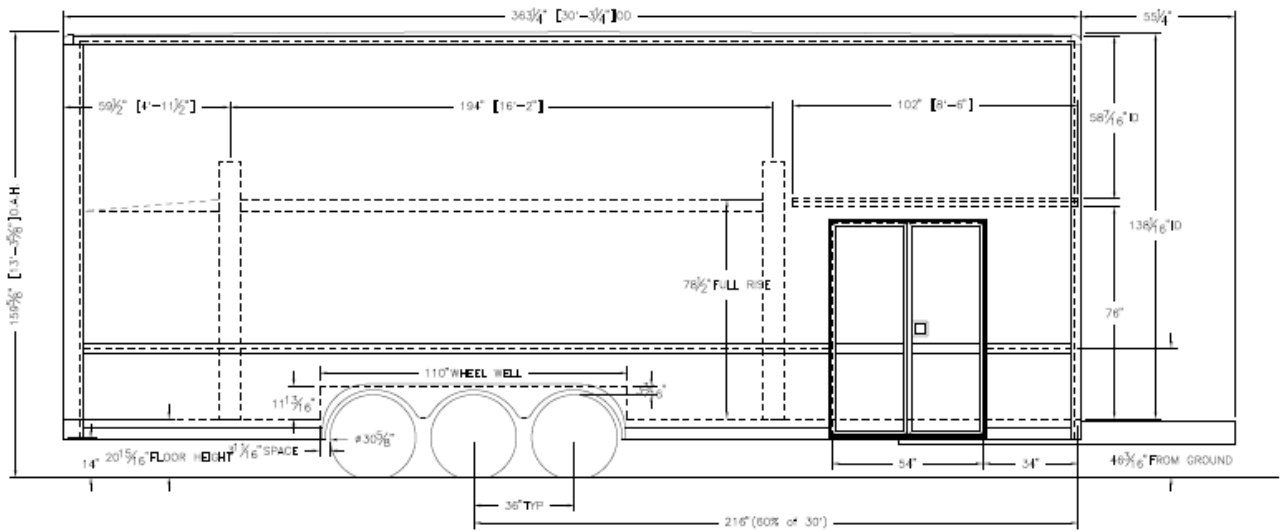
(2) Outside Recept

Cabinets: C-Tech All Aluminum

(6') Base cabinets 40 x 24

(6') Over Head

(2') Closet w/Shelf and Hanger Bar



DRAWN BY: MUEL		DRAWING DESCRIPTION: PX-30T SIDE VIEW OF 30' TRAILER		CUSTOMER:	
X & W		DRAWING SCALE: 3/8" = 1'		FILE LOC & FILE NUMBER: PONY EXPRESS TRAILERS	
DRAWN DATE: 08/16/07		SERIES: PONY EXPRESS TRAILERS		PARTS ENGINEERING/DRAWINGS/SILVER CROWN TRAILERS/72520010/2	
LET		BY		DATE	



Silver Crown, L.L.C.

104 Miller Drive

White Pigeon, MI. 49099

Phone: (269) 483 - 7900 Fax: (269) 483 - 1540

www.SilverCrownCoach.com



Order Date		Pro #	Salesman
Vin #			
Dealer			
Address			
2008 PX Package Trailer Dealer Order Form			
Retail Name	Dave Schultz	30PST	
Phone/Fax		Fax	Matching Coach
Floorplan		Dealer Check	
BASE PRICES		Qty	Options
P30RST 16' Lift	7K Axles	<input checked="" type="checkbox"/>	<input checked="" type="checkbox"/> Stereo with interior and exterior speaker system
P34RST 23' Lift	8K Axles	<input type="checkbox"/>	<input checked="" type="checkbox"/> Street side escape door
P40RSILG 14' Lift Axles	10K	<input type="checkbox"/>	<input checked="" type="checkbox"/> Air Ride Suspension ilo Spring Suspension
P40RSLGG Lift Gate	10K Axles (Not Available)	<input type="checkbox"/>	<input checked="" type="checkbox"/> 4500# Power loading winch
C-TECH All Aluminum Cabinets			
40"h x 24"d Base Cabs			

Interior Height = 138" Standard			40"h x 34"d Motor Base Cabs
Shared Features			16"h x 14"d Over Head Cabs
Base	102"W x 138"H x L		76" x 24" Closet w/Shelf and Hanger
Custom Length			24" Base Cab Drawer Unit
Carpeted Walls 36" H		X	76" x 24" Storage w/ three
Axle	(3)	X	76" x 10" Wheel well cabinets
Brakes	Electric	X	96" "L"Base Cabinet Package w/Closet
Suspension	Spring Suspension	X	
Tire Size		X	C/S Recessed Quartz Lights
Wheels	HWT Aluminum	X	48" Double Fluorescent Lights
Spare Tire	HWT Alum Rim w/Tire	X	18" Sunray Fluorescent Lights
Coupler	2-5/16"	X	110 V. Receipts
Hitch	Tag/GN	X	110 V. Exterior GFI Receipts
Frame	6" "W" Beam	X	Attic w/Retractable ladder
Jack(s)	(1)Elect/Hyd	X	
(1) Additional Jack Switch C/S Rear		X	8 KW ONAN Quite Diesel Generator
Stainless Steel Sides		X	12KW Onan Comm. Diesel Generator
Flooring	Aluminum Plate 3/16"	X	15K Power Tec Gen
Exterior Color	White	X	Bard One Ton A/C - 30 Amp Service req'd
Rear Door	Ramp 9'x97" w/power assist	X	50Amp Service
Lift	3/16" Plate floor	X	Stainless Nose Mount Box for Generator
Side Door	78" x 54" Double	X	x Black coin rubber flooring
E-Track	(2) Strips LL(2) Strips UL	X	Stainless - Ceiling Lower Level
Power Converter	55 Amp	X	Stainless Ramp Door
30 Amp Electric Package		X	Dual Elect/Hyd Jack ilo Single elec/hyd Jack
Load Lights	(2) Rear	X	
Attic w/Ladder(ladder mounted curbside)	9'	X	5' Beavertail
Front Wall Cabinet Package		X	Awning - ON REQUEST
			Aluminum L- Track
Standard Cabinet Package:			Galvanized E-Track
2' Closet w/ Shelf and Rod"			Air Coupler